



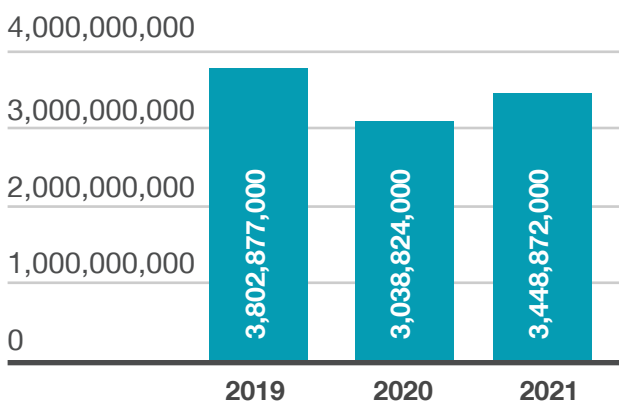
Water & Environment Consulting, your challenges become ours

Company Name	Water, Environment and Geo Services Ltd.
Trade Name	WE Consult
Board of Directors	Gilles ROCQUELAIN, Guillaume FABRE & Romaric VICENTE
Managing Director	Julien VERDONCK
Address	Plot 57, Lake Drive Road, Luzira, KAMPALA P.O Box 22856
Phone Number	+256 312 265 130 / +256 703 969 931
E-mail	contact@we-consult.ug
Website	www.we-consult.info
Beneficial Ownership	BRL Ingénierie owns 99% Gilles ROCQUELAIN 1%
Commercial Registry	VAT Reg No: 25112-Q TIN No: 1000020409 TLC 2020821706

WE Consult was incorporated in Uganda in 1997 to offer specific expertise for (ground) water and environmental studies, which can be considered its core business. Over the years, its activities have expanded to other areas of development including Water supply and sanitation, Geographical Information Systems (GIS) mapping, surveying, construction supervision and socio-economic surveys.

WE-Consult's team has offered specific expertise for (ground) water and environmental studies. By working on those jobs that require a broader scope of services, **WE can synthesise the many challenges of any projects into integrated, achievable programs.** We search for financially sound, environmentally sensitive solutions, in close consultation with clients, to guarantee optimal standards. Through our extensive experience and network in the East and Southern African region, WE Consult has gained the required experience during the execution of different projects related to our strategic areas of expertise.

Turnover of the past 3 years (UGX)



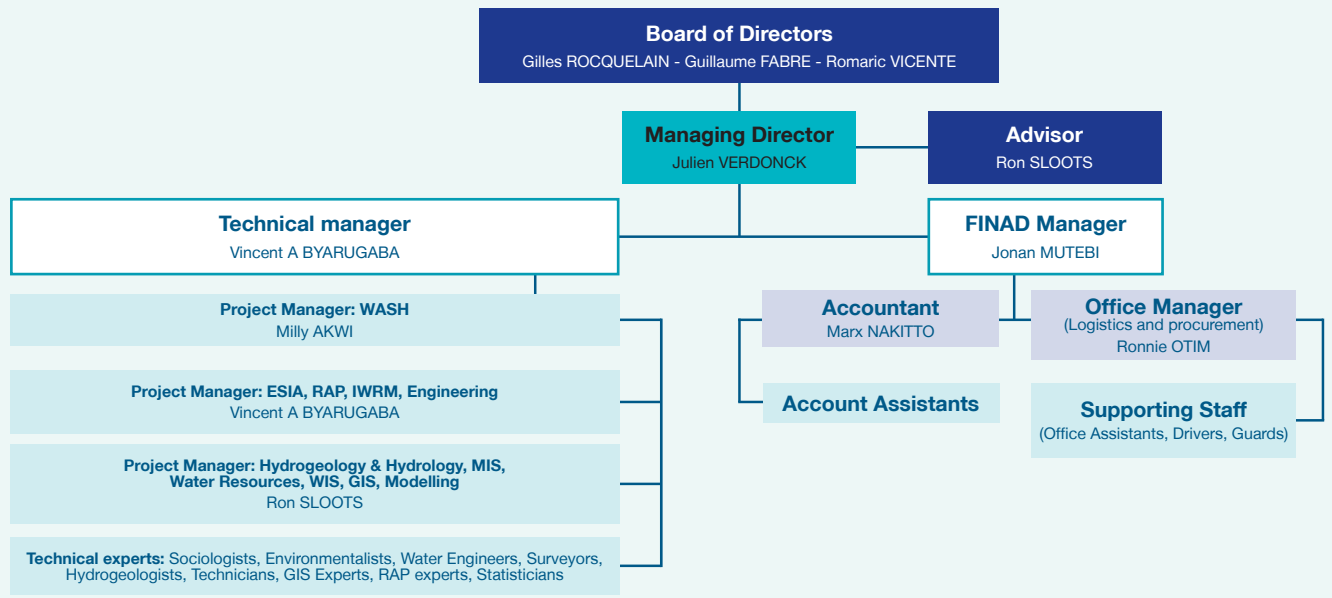
The team

WE Consult Uganda is now part of the BRL Group as a 100% subsidiary of BRL Ingénierie. The 2 companies have been working together for more than 10 years and **WE Consult Uganda is now the East African branch of BRLI.** While keeping its own usual activities, WE Consult works with BRLI on large scale projects in Uganda and the neighbouring countries (Kenya and Tanzania mainly).

BRL Ingénierie (BRLI) is the consulting branch of BRL, a company that developed a large and complex system of water infrastructures to improve and secure the water resources of its region in the South of France : BRL still owns, manages and operates under a concession contract 11 dams, 125 pumping stations, 8 000 km of buried pipes, and 105 km of canals and distributes 130 million m³ of water per year.

Staff (past 3 years)

	2019	2020	2021
Engineers and Management staff	6	6	5
Technicians and Skilled staff	4	4	4
Secretaries / Accountants	9	7	7
TOTAL:	19	17	16



Main fields of activity

- Capacity Building
- Institutional development
- Environmental Studies
- Project Evaluation
- Project Management

- Water resources assessment & management
- Water resources development
- Water engineering
- Water & sanitation studies
- Topographic surveys & GPS mapping

Photo by Colby Ray on Unsplash

Ministry of Water and Environment

- Supervision of the implementation of the Water Information System (WIS PHASE 1)
- Preparation of 2 catchments Water Resources Development and Management plans in the Kyoga Water Management Zone
- Detailed Assessment of Requirements for a National Water Resources Information System for Uganda



NELSAP (Nile Equatorial Lake Subsidiary Action Program)

- Identification of a multipurpose water resources development project in Lake Kyoga basin in Uganda

NWSC - National Water & Sewerage Corporation

- Feasibility and preliminary design studies for the development of water and sanitation infrastructures for Mbarara and Masaka areas
- Feasibility Studies and Water Quality Monitoring for the Development of a New Water Treatment Plant East of Kampala
- Detailed design and construction supervision for the development of water and sanitation infrastructure for Masaka area



Ministry of Works and Transport

- Environmental and social impact assessment of Port Bell redevelopment project in Kampala and Jinja pier



GIZ - Uganda

- Preparation of the Nile River Basin Management Plan and a Nile Basin Investment Program for NBI
- Establishment and setting up of water resources modelling and forecasting unit at Directorate of Water Resources Management
- Updating the first edition of the sourcebook on Africa's transboundary river and lake basin organisations

ADETEF

- Study on current and future potential water resources, under different climate scenarios, for the Mpanga river basin

AFD

- Complementary appraisal study for Water Supply and Sanitation supply project in Isingiro District

KCCA

Kampala Capital City Authority

- Mapping of sub surface drainage network in the Kampala Central Business District & designs for rehabilitation/extension of Nakivubo drainage system

French Government

- Smart Basin Project - Surface Water quantity monitoring using innovative technology (spatial altimetry)





©WE consult

Our Customers

